

Sticking Tommy

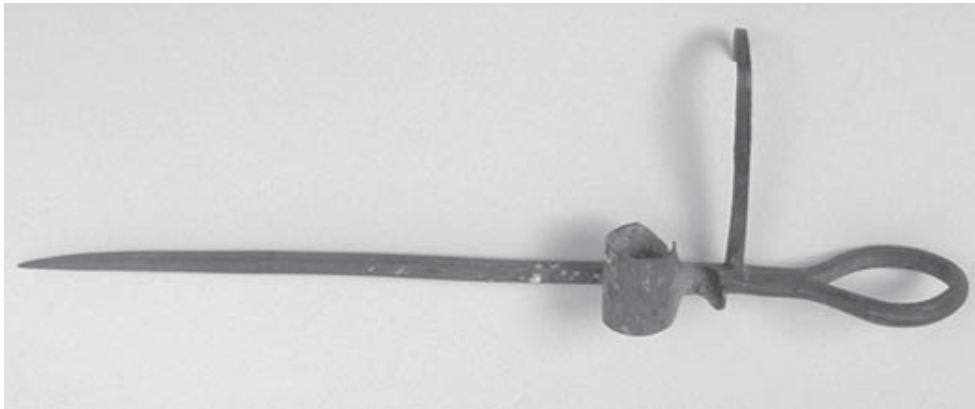


Each month The California Museum will introduce a new artifact with accompanying information and questions, which will consist of three different difficulty levels to choose from. To be used as a sponge or opening activity, you can use the artifact of the month for your students to study, question and form ideas. You can also print the image and place it on each student's desk, have them work in teams or project the image for a class activity.

Use the provided questions to help your students learn more about the artifact and its importance to California -- or make up your own questions. Most importantly, have fun!

Be sure to check out our web site, CaliforniaMuseum.org, for other interesting and unique activities for your students.

Sticking Tommy

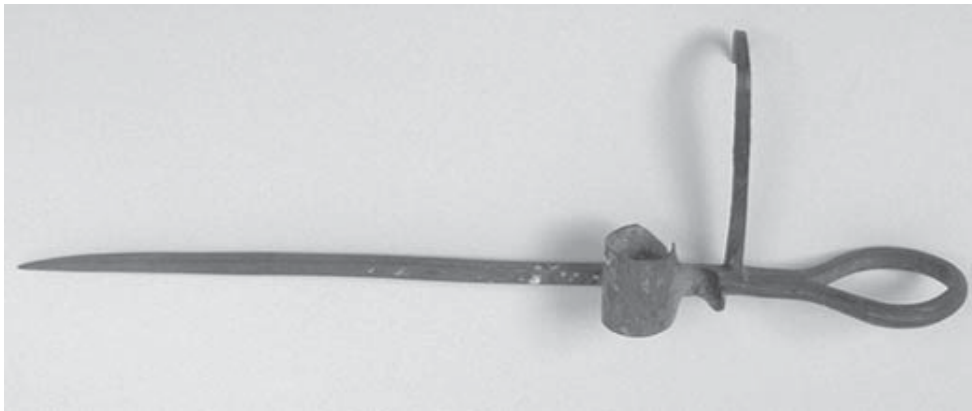


This sharply pointed, loop-handled metal rod is fitted with a circular band that held a candle in place and lit the way for miners working underground in dark hard-rock mine shafts. When miners required lighting in specific areas, they would thrust such rods into the mine's wall to make a candleholder. A "Sticking Tommy" could be removed and reused when needed.

Surface gold was fairly abundant in Northern California waterways when the Gold Rush began in 1848. Early prospectors used tools such as picks, pans, and shovels to break up and wash riverbed gravel in their quest for riches. However, the large numbers of gold-seekers quickly exhausted the precious metal that was easily mined from the riverbeds. Miners then turned to more technologically advanced but environmentally destructive mining techniques such as diverting waterways, blasting, and hydraulic mining.

President Lincoln later commented that gold from California's mines would significantly ease the heavy burden of national debt that had skyrocketed due to the immense costs of the Civil War.

Sticking Tommy



Elementary

- 1) Why would miners use a Sticking Tommy?
- 2) What are some other tools that a miner might have used?

Middle

- 1) How did mining negatively impact California's land?
- 2) Name three ways the Gold Rush impacted the nation.

High School

- 1) As a result of destructive mining, what are some long lasting effects that can be seen today?
- 2) Why did miners turn to more technologically advanced methods of mining?

Word Search

I G A T G E W F K B O E V G G
V D U X L L R H K M I G D O S
Q O U D D L F S T L U O V L W
D C N Y N G M V D R M C U D V
H A G P M P J N P I C K D R A
C N L K T I W D L M M B K U L
S T I C K I N G T O M M Y S R
M M N L G E R E R W C S Y H G
O O W H J U I I S P M N O F Q
N I J A G M V A X H G W I Z G
A Y T P N E V F C P A P B L N
J J S D R F V U A N K F A X I
H A D B R A W L I V I C T N N
C T E Y T J C R K B B R B O I
P D R S U H F C S L I P J S M

CANDLE
LINCOLN
PAN
STICKING TOMMY

CIVIL WAR
MINE SHAFT
PICK

GOLD RUSH
MINING
RIVERBED

