

“Women & Spirit: Catholic Sisters In America” California Exhibit Press Images



At the College of Nursing, students were taught by sisters, as seen in this 1911 photo of St. Mary's Hospital in San Francisco, CA. Courtesy of Sisters of Mercy of the Americas, West-Midwest Community.



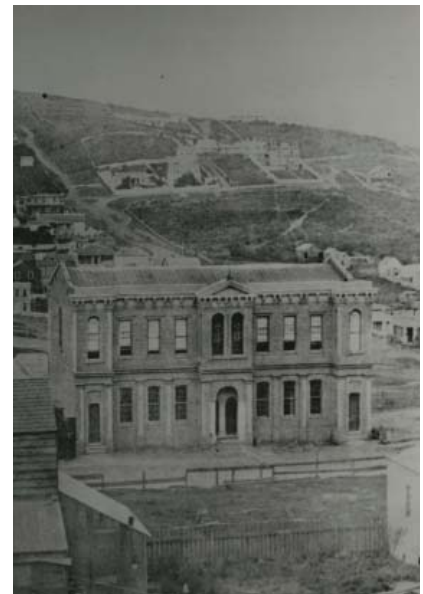
Sister of the Holy Family created temporary housing for refugees in response to the 1906 San Francisco earthquake and fire. Courtesy of Sisters of the Holy Family.



Sr. Josepha with children dressed for a celebration day at St. Genevieve Church in Fresno, CA, circa 1950s. Courtesy of Sisters of the Holy Family.



Sister Delores Smith participates in the Delano grape boycott, ca. 1965. Courtesy of Sisters of St. Francis of the Holy Family.



Presentation Convent School, San Francisco, 1855. Courtesy of Sisters of the Presentation of the Blessed Virgin Mary.

National Exhibit Press Images



Sister Lila Sciabica teaches student at Sacred Heart Elementary School in Carbondale, PA. Courtesy of Sisters, Servants of the Immaculate Heart of Mary.



Benedictine sister overseeing the completion of St. Anthony's Hospital offered the first form of affordable healthcare in Bemidji, MN in 1900. Courtesy of Benedictines of Duluth.



Sister Dolores Bundy champions the cause of Dr. Martin Luther King, Jr. at a 1970's religious conference. Courtesy of Oblate Sisters of Providence.



Six Sisters of Mary of the Presentation immigrated from France to North Dakota in 1902. Courtesy of Sisters of Mary of the Presentation.



Sr. Hilary Ross wrote over 40 scientific papers on the biochemistry of leprosy from 1933 through 1960. Courtesy of Daughters of Charity.



Sister Kathy Thornton as Executive Director of NETWORK, ca 1990. Courtesy of LWCR.

IMAGE USAGE GUIDELINES:

All photographs must be credited as listed. Usage of press images is limited to members of the media for editorial use only and **does not include** authorization for commercial or public usage.

Media contact:
Brenna Hamilton
Communications Director
The California Museum
(916) 651-0934
bhamilton@californiamuseum.org